



REPUBLIC

OF CYPRUS

MINISTRY OF HEALTH

HEALTH MONITORING UNIT

CYPRUS PUBLIC MATERNITY UNITS

PERINATAL HEALTH INDICATORS

FOR YEARS 2007-2009

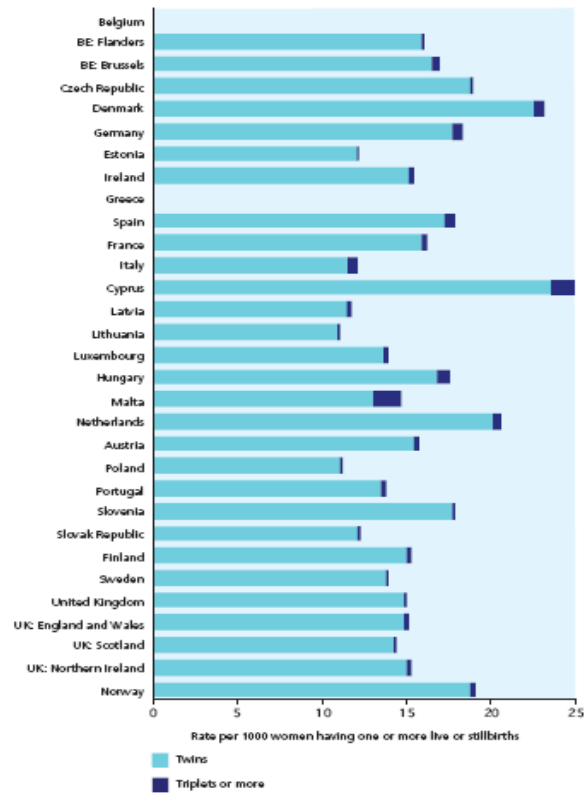
COMPARED TO

THE EUROPEAN PERINATAL HEALTH REPORT FOR YEAR 2004

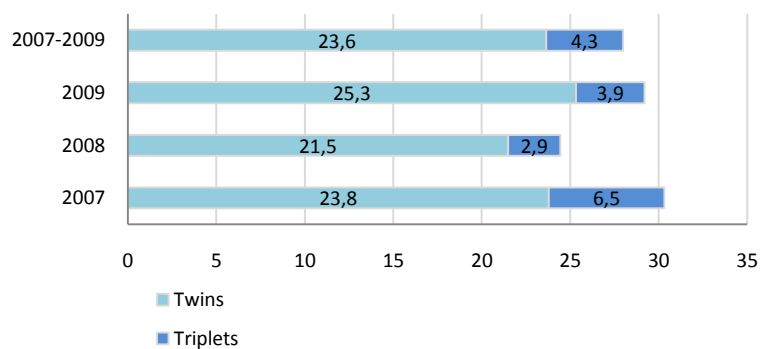
CHARACTERISTICS OF CHILDBEARING WOMEN

Indicator C7: Multiple births by number of fetuses per 1000 women with one or more live or stillbirths

Figure 4.1 Multiple birth rates per 1000 women with live or stillbirths, by number of fetuses

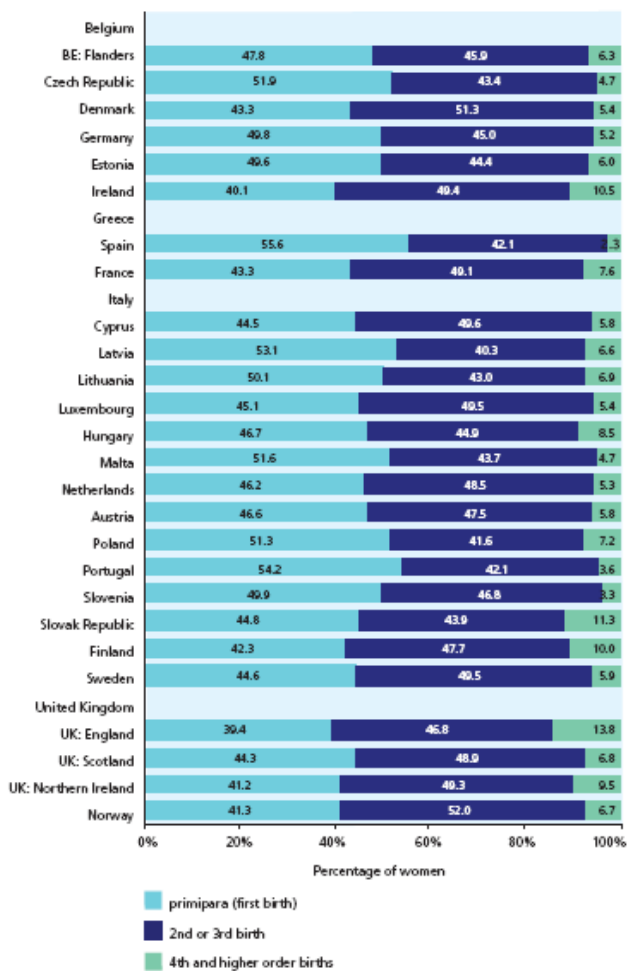


Multiple birth rates per 1000 women with live or stillbirths, by number of fetuses, Cyprus Public Sector 2007-2009

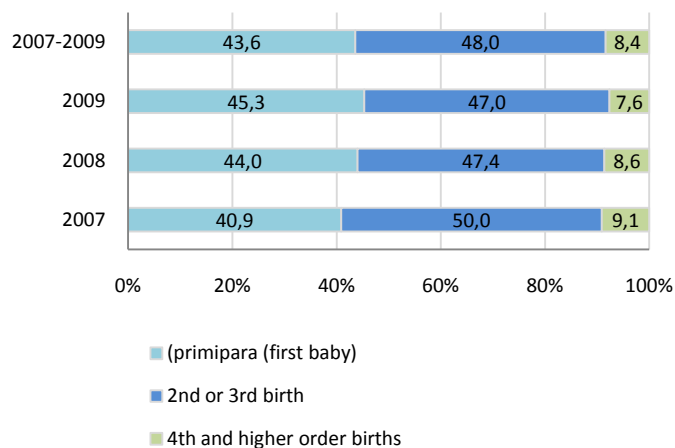


Indicator C9: Distribution of parity for women with live and stillbirths

Figure 4.4 Distribution of parity

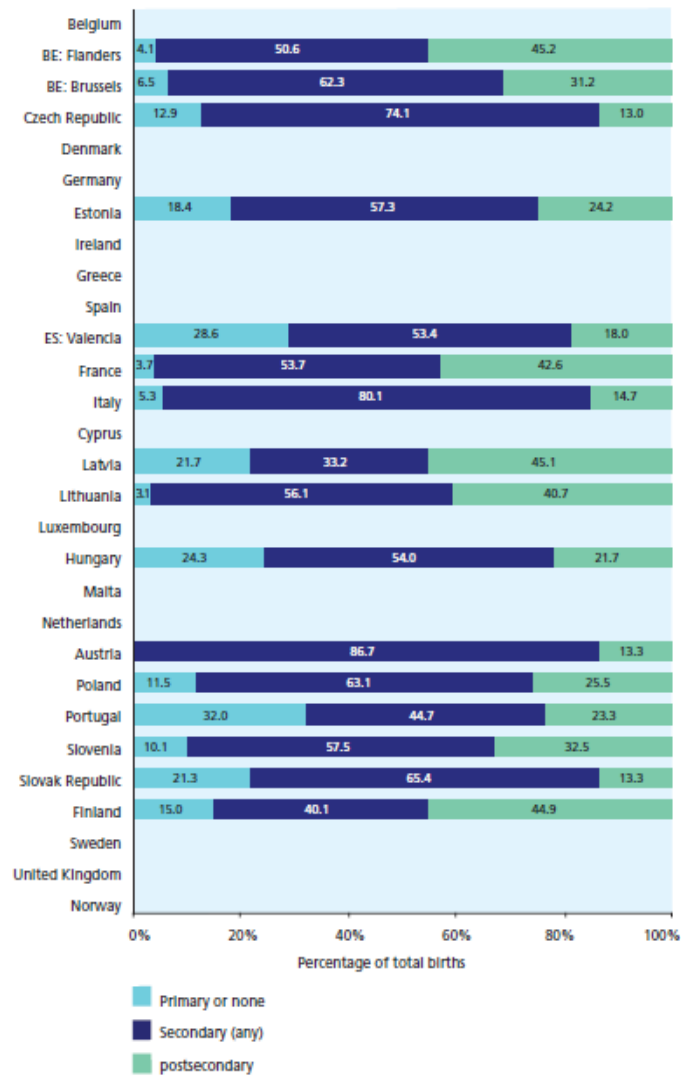


Distribution of parity, Cyprus Public Sector 2007-2009

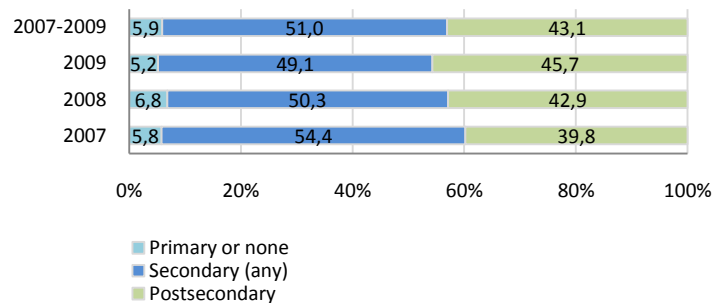


Indicator R5: Distribution of mother's educational level

Figure 4.5 Distribution of mother's education



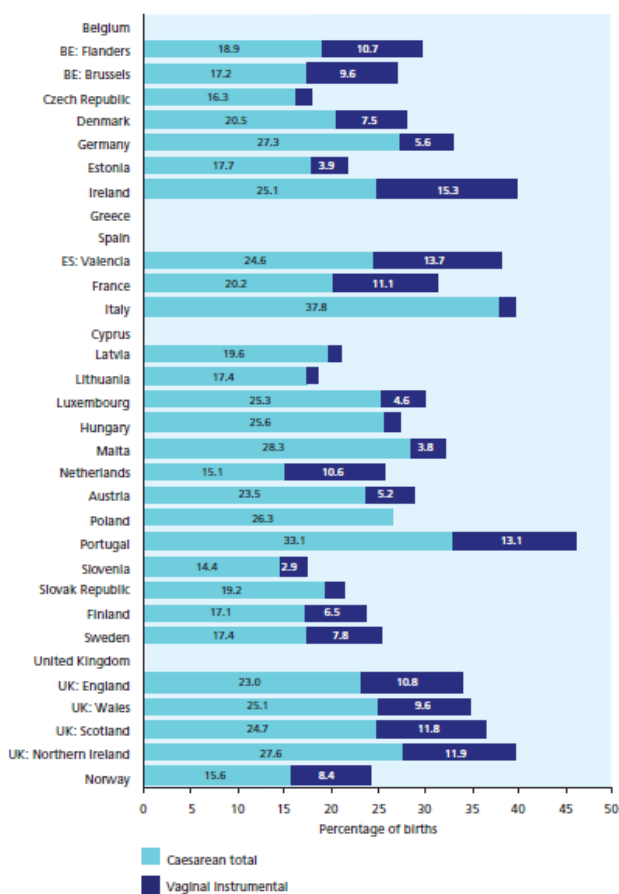
Distribution of mother's education, Cyprus Public Sector 2007-2009



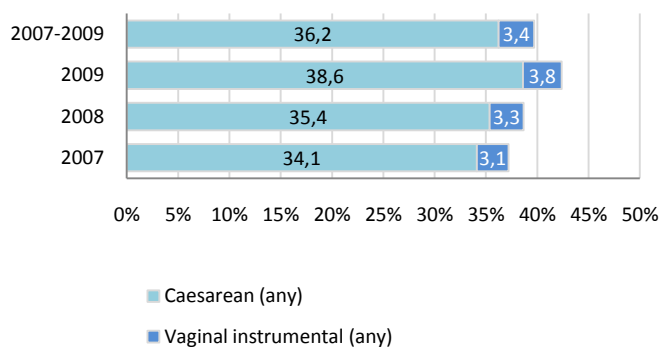
THE CARE OF WOMEN AND BABIES DURING PREGNANCY AND THE POSTPARTUM PERIOD

Indicator C10: Number of births by mode of delivery

Figure 5.1 Percentage of births by mode of delivery



Percentage of births by mode of delivery, Cyprus Public Sector 2007-2009



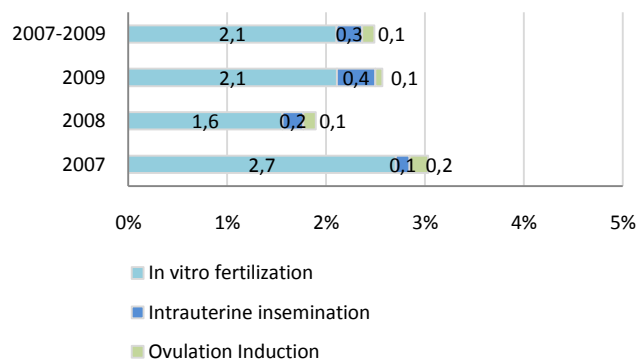
Indicator R6: Assisted reproductive techniques

Figure 5.3 Percentage of women with live and stillbirths following assisted pregnancy procedures



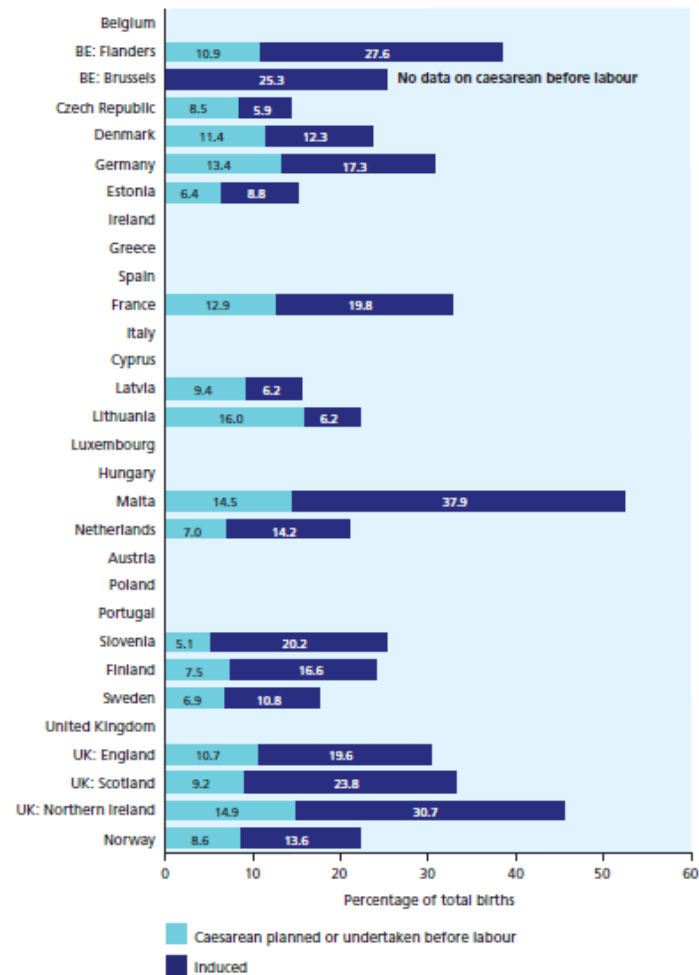
Some countries can only provide first category, on in vitro fertilisation

Percentage of women with live and stillbirths following assisted pregnancy procedures, Cyprus Public Sector 2007-2009

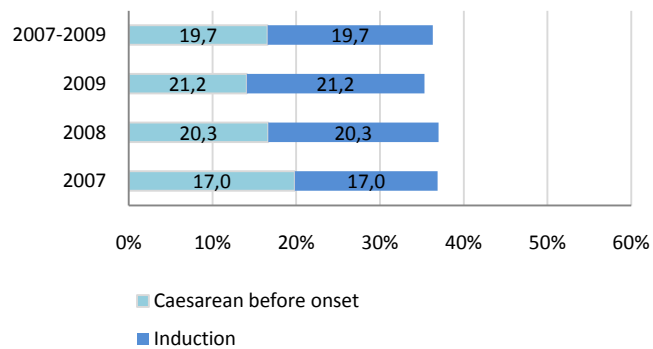


Indicator R8: Mode of onset of labour

Figure 5.4 Inductions of labour and caesarean deliveries before labour

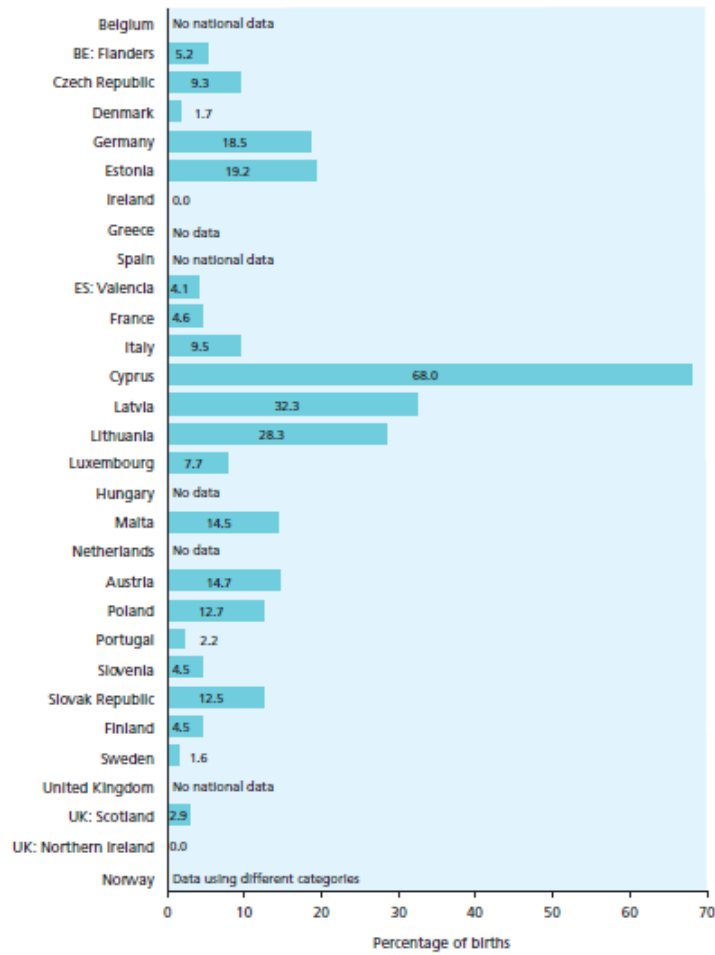


Induction of labour and caesarean deliveries before labour, Cyprus Public Sector 2007-2009

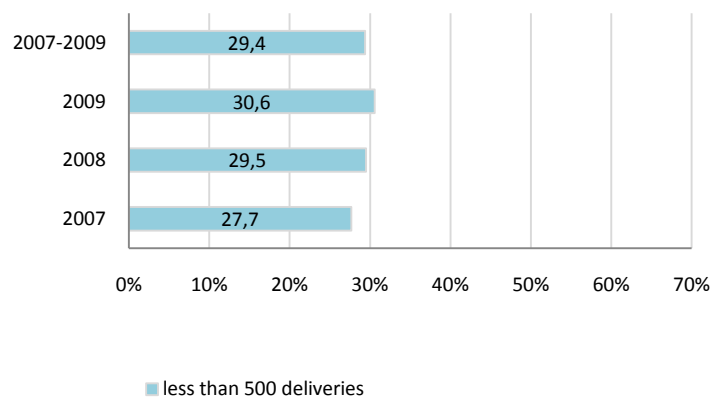


Indicator R9: Distribution of place of birth

Figure 5.5 Percentage of births in maternity units with fewer than 500 deliveries per year.

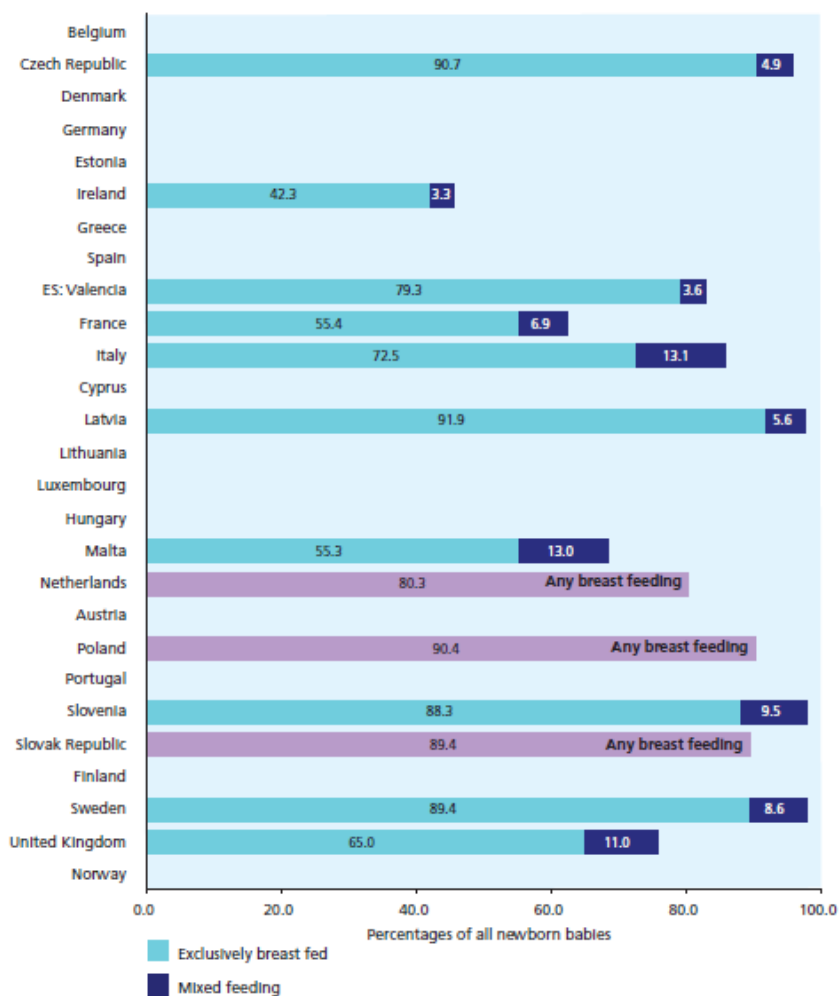


Percentage of births in maternity units with fewer than 500 deliveries per year, Cyprus Public Sector 2007-2009

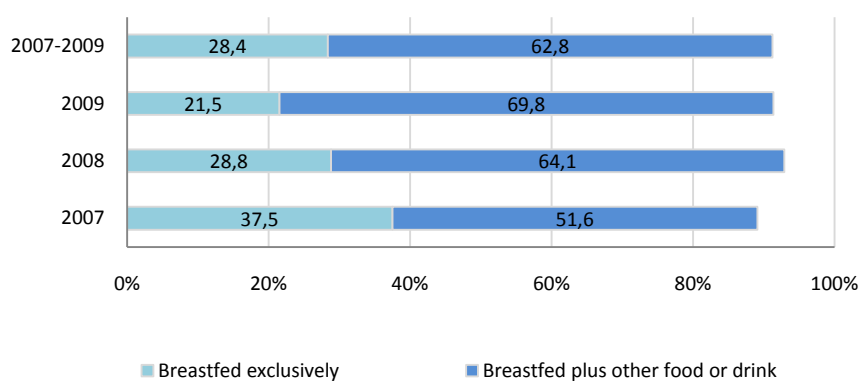


Indicator R10: Breast feeding in the first 48 hours after birth per 100 live births

Figure 5.7 Distribution of exclusive and mixed breast feeding for the first 48 hours.

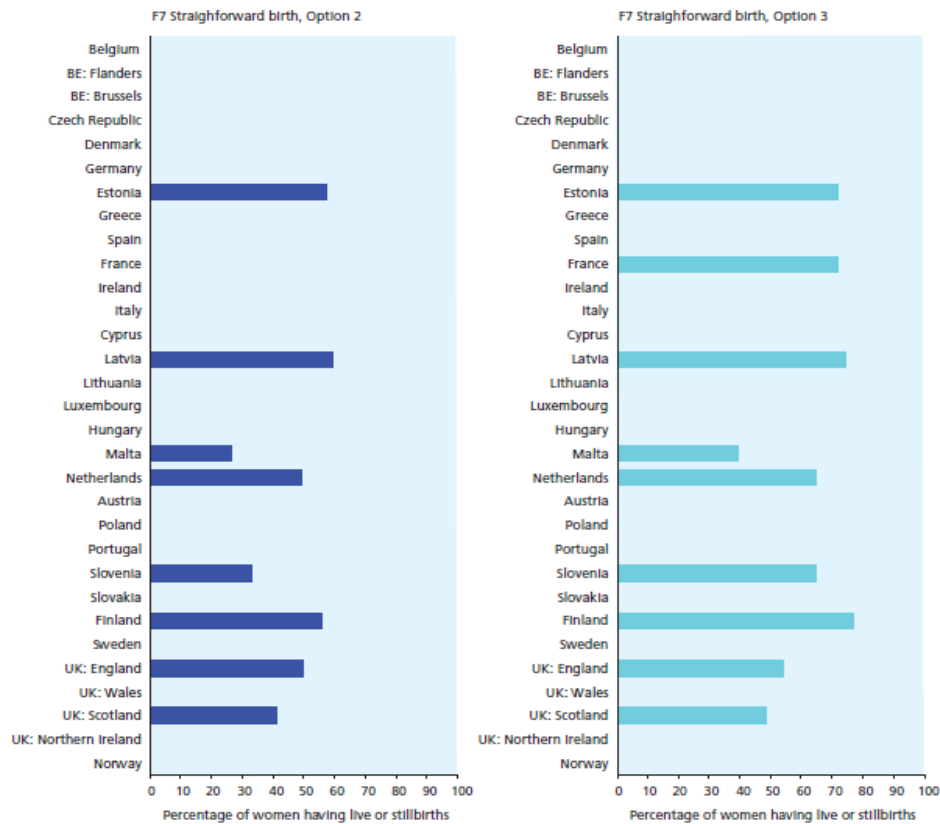


Distribution of exclusive and mixed breast feeding for the first 48 hours, Cyprus Public Sector 2007-2009



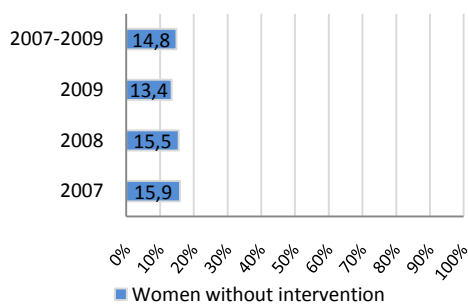
Indicator F7: Birth without obstetric intervention

Figure 5.8 Births without obstetric intervention, option 2 and 3

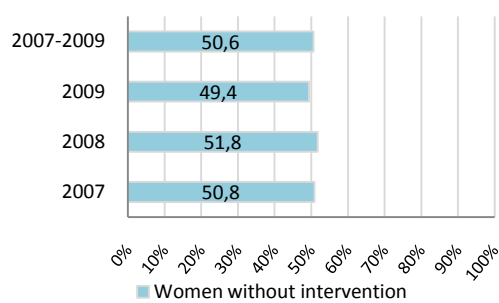


Percentage of women without obstetric intervention, Cyprus Public Sector 2007-2009

*Straightforward delivery, Option 2



**Straightforward delivery, Option 3



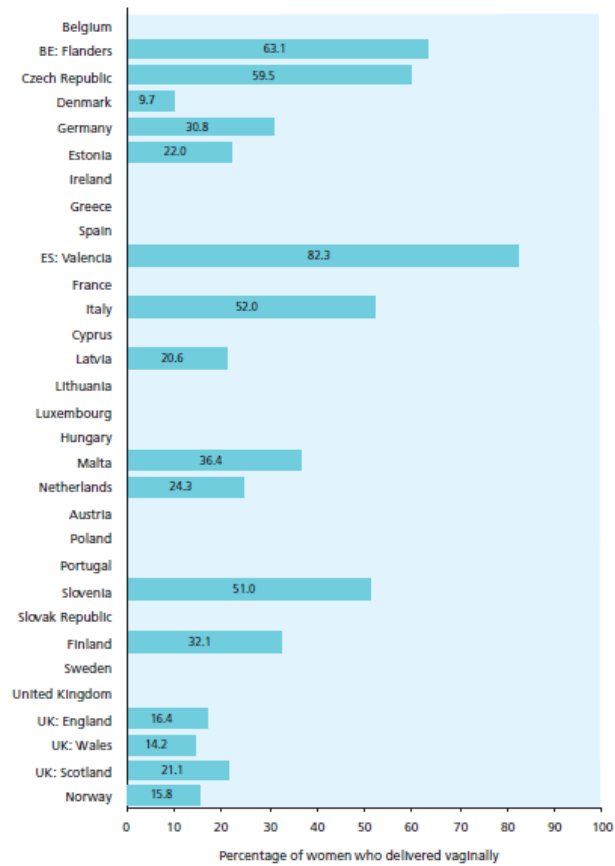
*Straightforward delivery, Option 2
 Spontaneous onset of labour (no induction)
 Spontaneous delivery (with or without augmentation)
 No episiotomy.

**Straightforward delivery, Option 3
 Spontaneous onset of labour (no induction)
 Spontaneous delivery (with or without augmentation)

Denominator: Number of women delivering one or more live or stillborn babies

Indicator F3: State of the perineum

Figure 5.9 Episiotomy rates



Episiotomy rates - Percentage of women who delivered vaginally, Cyprus Public Sector 2007-2009

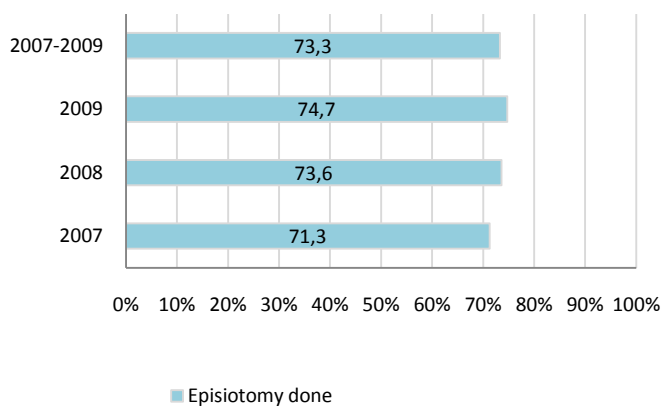
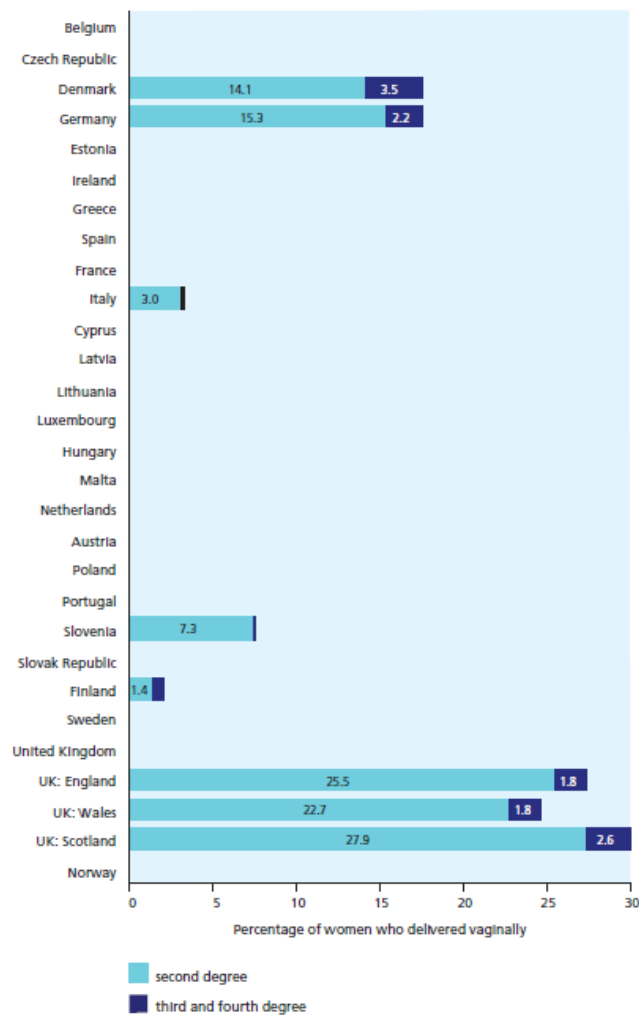
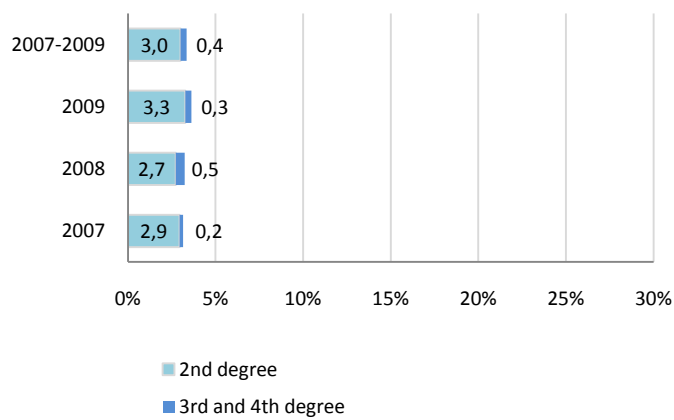


Figure 5.10 Vaginal tears by severity



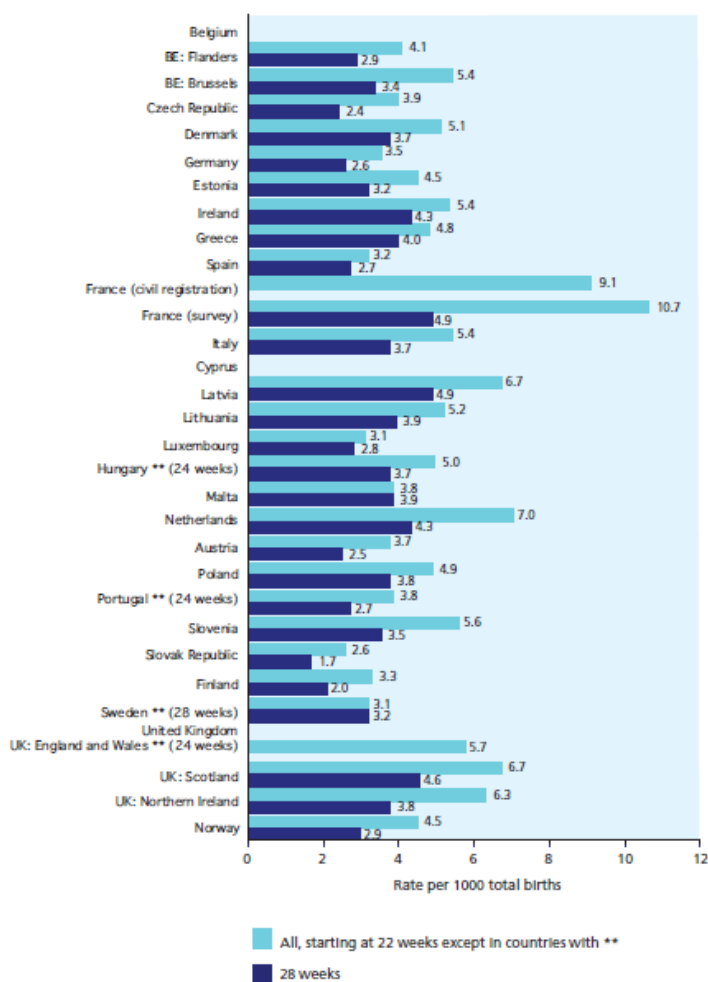
Vaginal tears by severity - Percentage of women who delivered vaginally, Cyprus Public Sector 2007-2009



BABIES' HEALTH: MORTALITY AND MORBIDITY DURING PREGNANCY AND IN THE FIRST YEAR OF LIFE

Indicator C1: Fetal mortality rate

Figure 7.1 Fetal mortality rate per 1000 total births



Fetal mortality per 1000 total births, Cyprus Public Sector 2007-2009

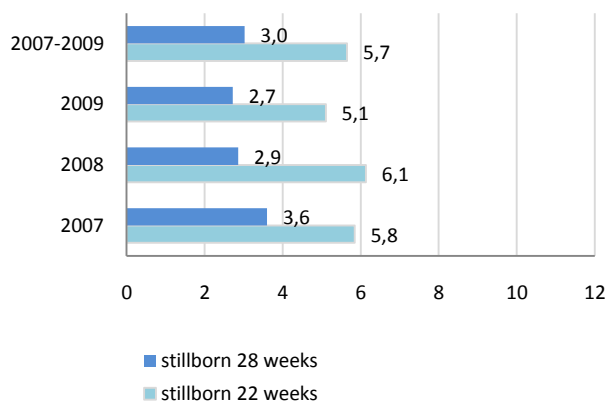
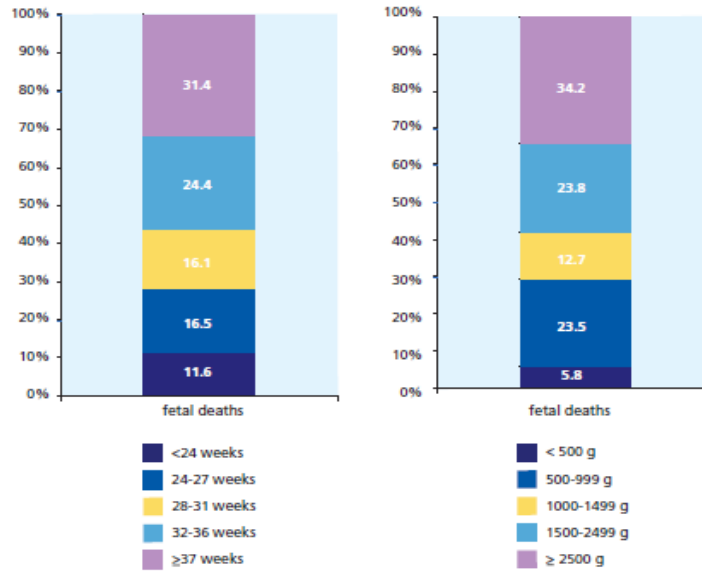
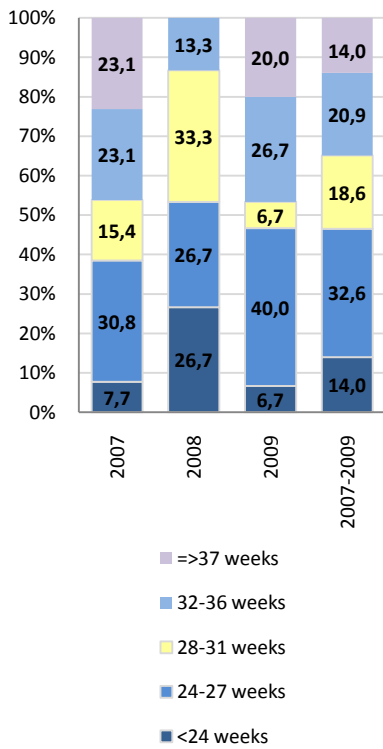


Figure 7.2 Percentage of fetal deaths by gestational age and birthweight group in all countries contributing data



Percentage of fetal deaths by gestational age, Cyprus Public Sector 2007-2009



Percentage of fetal deaths by birthweight, Cyprus Public Sector 2007-2009

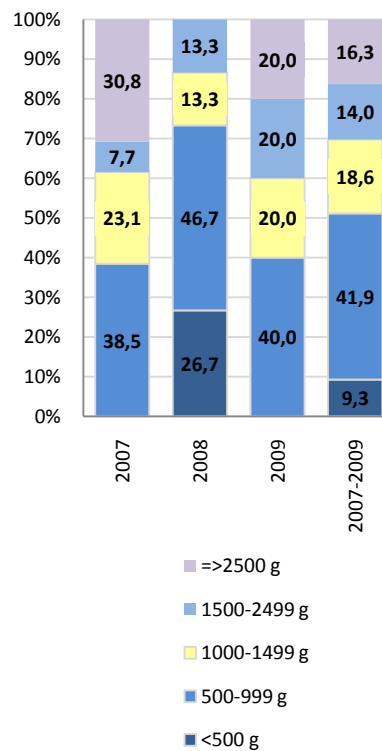
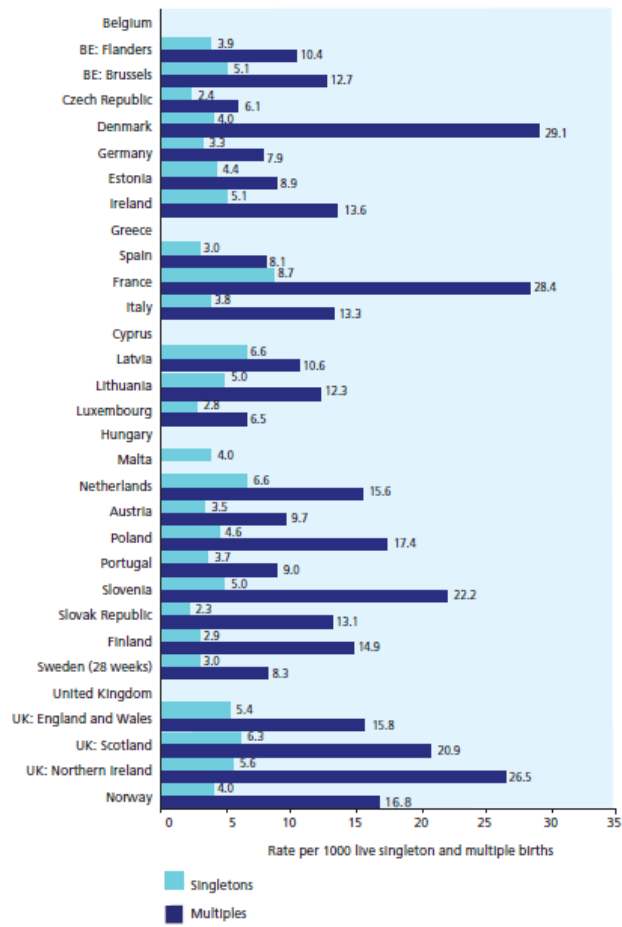
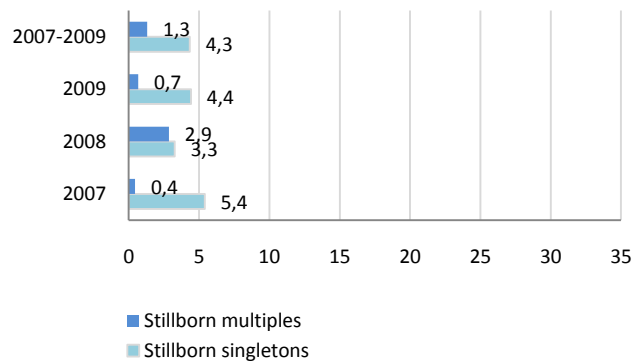


Figure 7.3 Fetal mortality rate per 1000 singleton and multiple births.

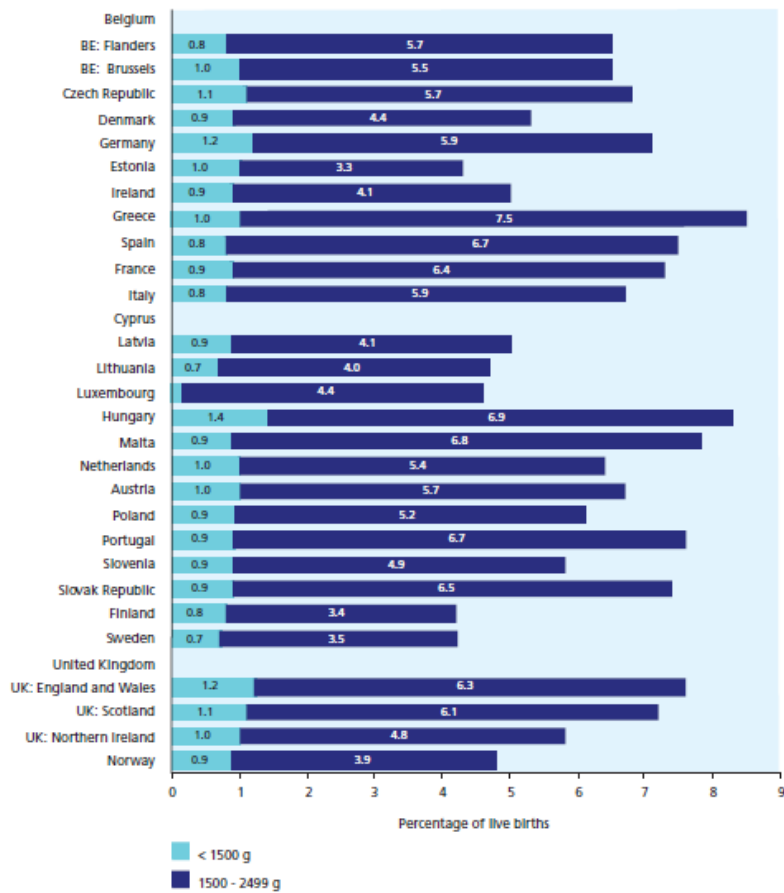


Fetal mortality rate per 1000 singleton and multiple births, Cyprus Public Sector 2007-2009

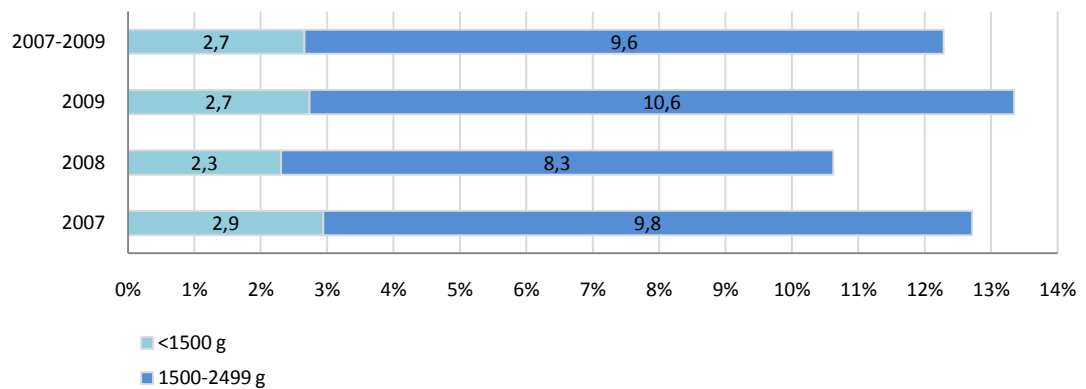


Indicator C4: Distribution of birth weight

Figure 7.8 Birth weight under 1500 g and 1500-2499 g among live births

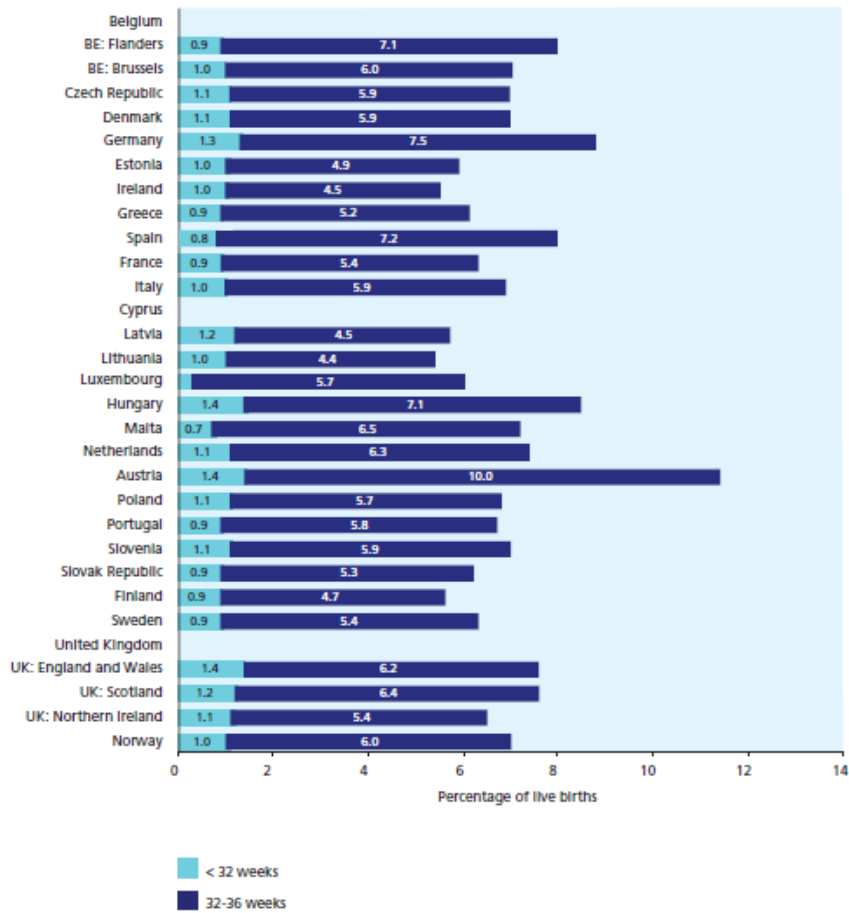


Birth weight under 1500 g and 1500-2499 g among live births, Cyprus Public Sector 2007-2009

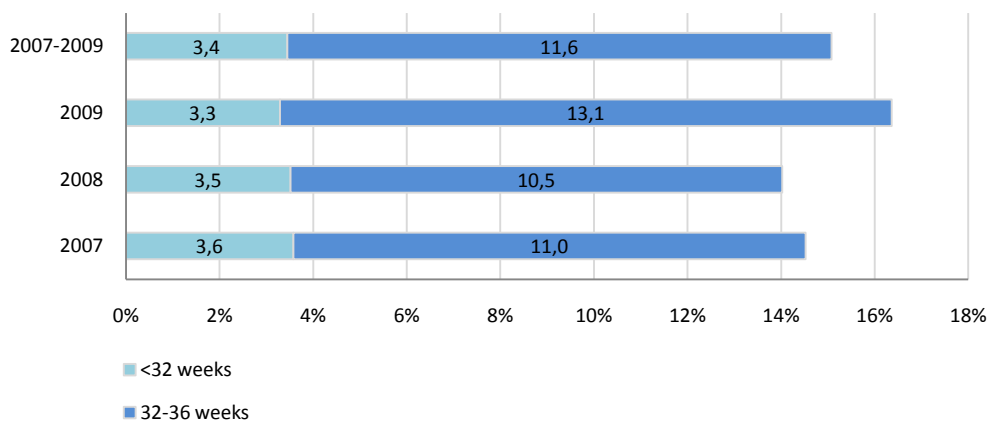


Indicator C5: Distribution of gestational age

Figure 7.10 Percentage of live births with a gestational age <32 weeks and between 32-36 weeks



Percentage of live births with a gestational age <32 weeks and between 32-36 weeks, Cyprus Public Sector 2007-2009



Indicator R2: Five-minute Apgar score as a percentage of live births

Figure 7.12 Percentage of live births with an Apgar score at 5 minutes less than 4 and between 4 and 6

